

Statue of Liberty Museum

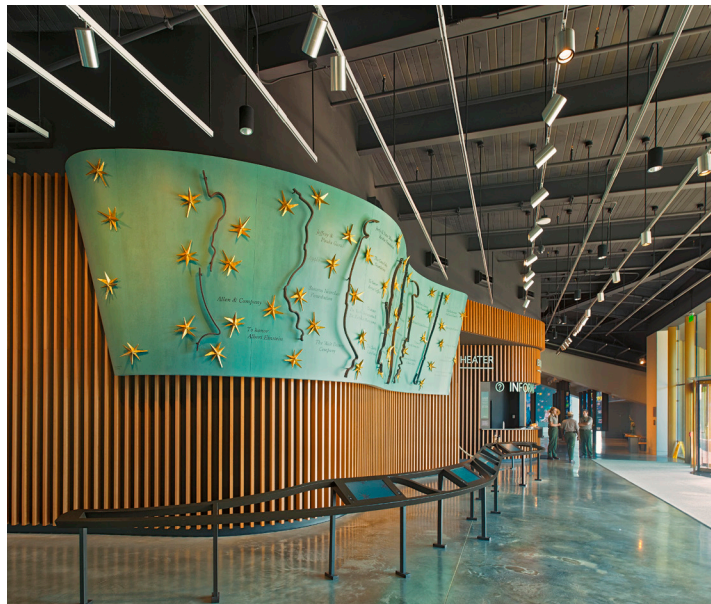
New Museum Space

Location	New York, New York	Size	26,000 square feet
Architect	FXCollaborative	Cost	Confidential
Services	MEP/FP	Completed	2019
LEED	<i>LEED Gold Certified</i>		
Awards	<i>2020 International Architecture Award</i>		



The National Park Service, together with the Statue of Liberty - Ellis Island Foundation, constructed a new 26,000 square-foot Statue of Liberty Museum on Liberty Island. Kohler Ronan is proud to have contributed comprehensive mechanical, electrical, plumbing, and fire protection services in support of revitalizing this national treasure. Landscaping and lighting were incorporated in the plans as part of a larger beautification effort, but the primary focus of the construction was to better accommodate the site's growing number of visitors in a newly-designed facility on the northwest portion of the island. Making this beacon of hope and freedom accessible to as many people from around the world as possible was critical to the Foundation and the entire design team.

From the exterior, the museum appears as an extension of the surrounding park and its historic site. Constructed from materials native to Liberty Island, the state-of-the-art museum is designed to withstand hurricane force winds and 500-year flood levels. Sustainable features include a green roof-scape and bird-safe glass. On the interior, thoughtfully designed interactive exhibits and iconic artifacts, including Lady Liberty's original torch, fully engage the visitor and provide an immersive experience in which all can more fully appreciate the history, construction, and true significance of the Statue of Liberty.



Images: © Anna Wesolowska / www.photographerhedman.com