

John Hay Library

Brown University

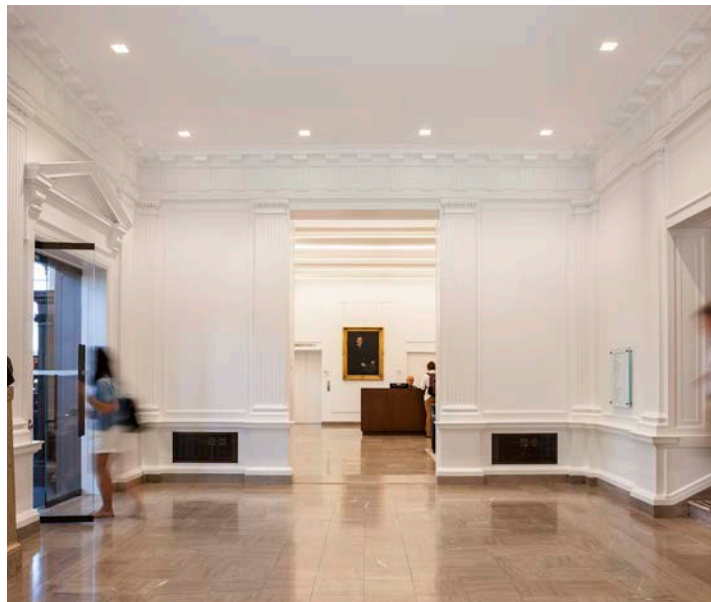
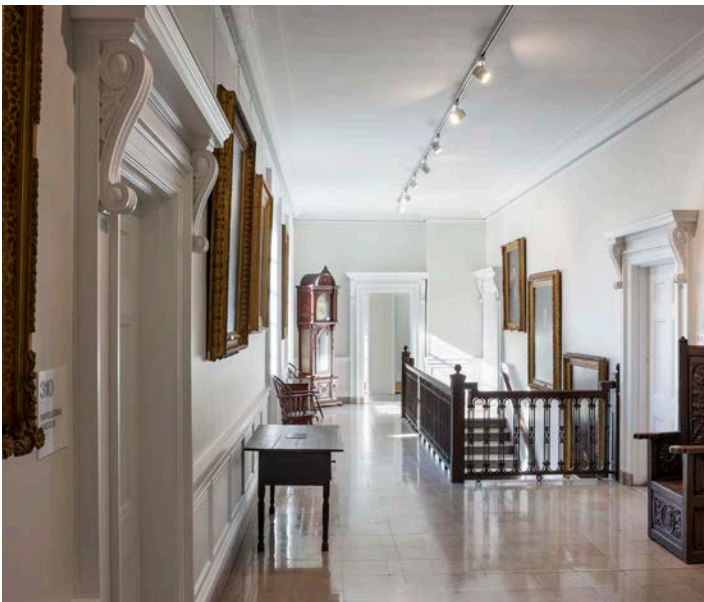
Location	Providence, Rhode Island	Size	4,416 square feet (main reading room)
Architect	Selldorf Architects	Cost	\$15 million
Services	MEP/FP	Completed	2014



After approximately one year of renovations and restoration, the beautiful John Hay Library was reopened to the Brown University community in September of 2014. A primary focus of the renovation was to return the main reading room, formerly subdivided into three sections, to its original layout and grandeur while at the same time improving its functionality for current and future needs of the students and faculty. Kohler Ronan created MEP designs in support of the architectural plans.

Project scope included the reconfiguration of the entry and improved circulation, expanded and dedicated study spaces including the main reading room, separate special collections area, enhanced exhibition gallery, consultation room, seminary spaces, student lounge, and wheel chair access on the northeast side of the building.

Kohler Ronan's engineering design included new HVAC systems and controls to support the strict temperature and humidity requirements of the library stacks and special collections. Updated electrical and lighting was also provided for within the reading room and associated spaces. The open floor plan of the main reading room is lit by 16 feet-tall windows on three walls, as well as hanging pendants (based on the original 1910 fixtures), and desk top lamps. The 25 foot-high coffered ceilings and carved oak shelving have been restored. The sum total of the renovation is a truly gorgeous space now more conducive to expanded programs and contemporary use of the library.



Images: Warren Jagger Photography